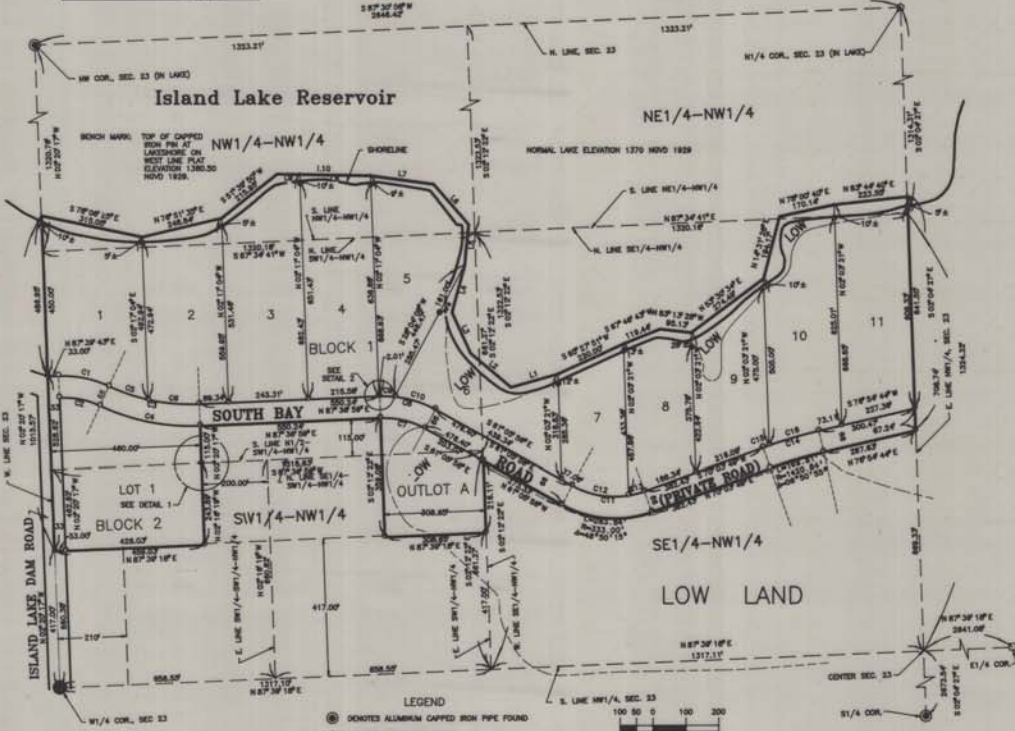


MINNESOTA POWER LEASE SITE NO. 1

Part of the Northwest Quarter of Section 23, Township 52 North, Range 15 West, 4th Principal Meridian, Saint Louis County, Minnesota



CURVE TABLE

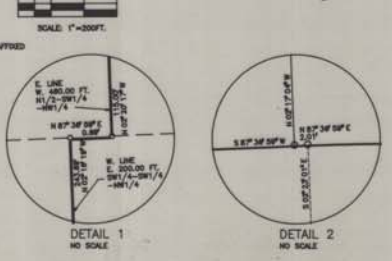
CH	BEARS	ARCLEN
C1	27°28'44"	253.107
C2	27°28'44"	257.597
C3	27°28'44"	254.284
C4	27°28'44"	254.284
C5	27°28'44"	254.284
C6	27°28'44"	254.284
C7	27°28'44"	254.284
C8	27°28'44"	254.284
C9	27°28'44"	254.284
C10	27°28'44"	254.284
C11	27°28'44"	254.284
C12	27°28'44"	254.284
C13	27°28'44"	254.284
C14	27°28'44"	254.284

LEGEND

- DOKITED ALUMINUM CAPPED IRON PIPE FOUND
- DOKITED IRON PIPE FOUND
- DOKITED 3/4 INCH DIA. REBAR FOUND
- DOKITED 3/4 INCH DIA. REBAR SET W/ PLASTIC CAP RL51075 AFFIXED
- DOKITED CAST IRON MONUMENT FOUND
- DOKITED ALUMINUM CAPPED SQUARE TUBE FOUND
- DOKITED EDGE LOW GROUND

BEARINGS SHOWN ON THIS PLAT BASED ON THE WEST LINE OF THE NW 1/4 HAVING AN ASSUMED BEARING OF N87°30'10\"

L.R.	BEARING	DISTANCE
L.1	S 72°21'20\"	148.757
L.2	S 89°51'01\"	241.897
L.3	N 89°29'29\"	138.287
L.4	N 10°21'39\"	143.217
L.5	N 89°49'19\"	127.257
L.6	S 14°17'27\"	142.297
L.7	N 86°11'04\"	174.257
L.8	N 88°42'29\"	215.257
L.9	N 88°42'29\"	215.257
L.10	N 88°42'29\"	215.257
L.11	N 88°42'29\"	215.257
L.12	N 88°42'29\"	215.257



KNOW ALL MEN BY THESE PRESENTS: That Minnesota Power, a Minnesota Corporation, owns and proprietor of the following described property situated in the County of Saint Louis, State of Minnesota, to-wit:

That part of the Northwest Quarter of Section 23, Township 52 North, Range 15 West, Saint Louis County, Minnesota, described as follows:

Commencing at the West quarter corner of said Section 23, thence North 2 degrees 20 minutes 17 seconds West, assumed bearing, along the west line of said NW 1/4 a distance of 417.00 feet to the north line of the South 417.00 feet of the SW 1/4-NW 1/4 and the point of beginning; thence North 87 degrees 39 minutes 18 seconds East, along said north line a distance of 459.02 feet to the east line of the East 200.00 feet of the SW 1/4-NW 1/4-NW 1/4 of said Section 23, thence North 2 degrees 18 minutes 19 seconds West, along said west line a distance of 243.89 feet to the north line of said SW 1/4-NW 1/4-NW 1/4; thence North 87 degrees 26 minutes 39 seconds East, along said north line a distance of 0.89 feet to the east line of the West 480.00 feet of the NW 1/4-NW 1/4-NW 1/4 of said Section 23, thence North 2 degrees 20 minutes 17 seconds West, along said west line a distance of 115.00 feet to the north line of the South 115.00 feet of said NW 1/4-NW 1/4-NW 1/4; thence North 87 degrees 36 minutes 59 seconds East, along said north line a distance of 550.24 feet to the east line of the East 508.85 feet of said SW 1/4-NW 1/4, thence South 2 degrees 12 minutes 22 seconds East, along said west line a distance of 359.06 feet to the north line of the South 417.00 feet of said SW 1/4-NW 1/4; thence North 87 degrees 18 minutes 18 seconds East, along said north line a distance of 308.65 feet to the east line of said SW 1/4-NW 1/4; thence North 2 degrees 12 minutes 22 seconds West, along said west line a distance of 216.11 feet; thence North 81 degrees 00 minutes 00 seconds East a distance of 273.33 feet; thence westerly a distance of 583.84 feet, using a tangential curve concave to the north, having a radius of 333.00 feet and a central angle of 68 degrees 50 minutes 13 seconds; thence North 79 degrees 03 minutes 49 seconds East a distance of 382.43 feet; thence northwesterly, a distance of 189.81 feet, using a tangential curve concave to the southeast, having a radius of 1425.84 feet and a central angle of 13 degrees 20 minutes 20 seconds; thence North 78 degrees 54 minutes 44 seconds East a distance of 287.43 feet to the east line of the NW 1/4; thence North 2 degrees 04 minutes 27 seconds West, along said west line a distance of 105.14 feet; thence North 83 degrees 44 minutes 40 seconds West a distance of 222.55 feet; thence North 78 degrees 00 minutes 40 seconds West a distance of 170.16 feet; thence North 14 degrees 31 minutes 21 seconds West a distance of 194.17 feet; thence South 53 degrees 30 minutes 24 seconds East a distance of 274.40 feet; thence North 83 degrees 13 minutes 28 seconds West a distance of 88.12 feet; thence South 87 degrees 45 minutes 43 seconds East a distance of 118.84 feet; thence South 85 degrees 27 minutes 01 seconds West a distance of 220.00 feet; thence South 74 degrees 21 minutes 30 seconds West a distance of 145.53 feet; thence North 49 degrees 01 minutes 01 seconds West a distance of 181.62 feet; thence North 14 degrees 28 minutes 10 seconds West a distance of 135.29 feet; thence North 11 degrees 21 minutes 29 seconds East a distance of 144.31 feet; thence North 5 degrees 48 minutes 18 seconds East a distance of 127.36 feet; thence North 41 degrees 10 minutes 07 seconds West a distance of 183.29 feet; thence North 81 degrees 11 minutes 24 seconds East a distance of 194.32 feet; thence North 88 degrees 47 minutes 07 seconds West a distance of 284.83 feet; thence South 51 degrees 28 minutes 50 seconds West a distance of 215.50 feet; thence North 78 degrees 51 minutes 30 seconds West a distance of 248.84 feet; thence North 78 degrees 56 minutes 15 seconds West a distance of 315.05 feet to the west line of said Section 23, thence South 2 degrees 20 minutes 17 seconds East, along said west line a distance of 1015.57 feet to the point of beginning.

Subject to and together with any valid assessments, restrictions and reservations if any.

He caused the same to be surveyed and plotted as MINNESOTA POWER LEASE SITE NO. 1 and does hereby donate and dedicate to the public for public use forever the Island Lake Dam Road.

IN WITNESS WHEREOF said Minnesota Power, has caused these presents to be signed by its proper officers this 11th day of January, 1995.

OWNER:
By *A.D. Hansen* *R.D. Edwards*
Vice President, Utility Dept. *VP - Const. Div. Div.*

STATE OF MINNESOTA)
COUNTY OF SAINT LOUIS) 205

The foregoing instrument was micrographed before me this 11th day of January, 1995 by *A.D. Hansen* as *Manager, Electric Utility Operations* and *R.D. Edwards* as *VP - Const. Div. Div.* Minnesota Power, a Minnesota Corporation, on behalf of the Corporation.
William J. Unger, Clerk of Court
Clerk of Court's Office

I hereby certify that I have surveyed and plotted the property described on this plat as MINNESOTA POWER LEASE SITE NO. 1, that this plat is a correct representation of the survey; that all distances are correctly shown on the plat in feet and hundredths of a foot, that all monuments have been correctly placed in the ground as shown; that the middle boundary lines are correctly designated on the plat, and that there are no well lands as defined in ME 505.02 Subd. 1, or public highways to be indicated other than as shown.

STATE OF MINNESOTA)
COUNTY OF ST. LOUIS) 205

The foregoing Surveyor's Certificate was acknowledged before me this 11th day of January, 1995 by *Herman B. Unger*, Minnesota Registration No. 10722.

I hereby certify that this plat has been checked and approved 30th day of JANUARY, 1995
Robert C. Bond
Saint Louis County Surveyor 1520A

We do hereby certify that on the 28 day of March, 1995, the Board of Commissioners of Saint Louis County, Minnesota, approved this plat.
By *William J. Unger* Chairman
Robert C. Bond Auditor

All Taxes Paid
May 2, 1995
By *Gordon D. McNeal*
St. Louis County Auditor
By *William J. Unger* Deputy

Office for
HELEN PETERSON, St. Louis County Auditor
DEPT. OF ST. LOUIS COUNTY RECORDS
STATE OF MINNESOTA
COUNTY OF ST. LOUIS

I hereby certify that the within instrument was filed in this office on May 11, 1995 at 3:03 p.m. and was duly filed as Document No. 0629640
By *Dora Tallon*
Deputy