

FIRST ADDITION TO HARRIS BAY
Part of Section 32,
Township 56 North, Range 14 West
and Part of Section 5,
Township 55 North, Range 14 West
St. Louis County, Minnesota

KNOW ALL MEN BY THESE PRESENTS: That Minnesota Power, a Minnesota Corporation and The Bank of New York, sole proprietors and mortgage holders of the following described property, located in the County of St. Louis, State of Minnesota, to wit: All that part of the NW1/4 of the SE1/4 and the SW1/4 of the SE1/4, Section 32, Township 56 North, Range 14 West and Government Lots 1 and 2, Section 5, Township 55 North, Range 14 West, 4th Principal Meridian, St. Louis County, Minnesota, bounded on the South and West by the Whiteface Reservoir and the North by the following described line:
Commencing at the Northeast corner of said NW1/4 of the SE1/4, Section 32; thence S33°05'57"E, along the East line of said NW1/4 of the SE1/4, a distance of 271.26 feet, to the point of beginning; thence S65°59'00"W, a distance of 102 feet, more or less, to the shoreline of the Whiteface Reservoir and there terminating.

Have caused the same to be surveyed and platted as FIRST ADDITION TO HARRIS BAY and do hereby donate and dedicate to the public use, forever, the road and utility easement, as shown on this plat.

In witness whereof Dave P. Jeronimus, on behalf of Minnesota Power, has hereunto set his hand and seal this 15th day of August, 2003.

Dave P. Jeronimus
Dave P. Jeronimus
VICE PRESIDENT



State of Min
County of St. Louis
This foregoing instrument was acknowledged before me, this 15th day of August, 2003, by Dave P. Jeronimus

Sam Schwagerl
Sam Schwagerl
Notary Public, County of St. Louis, State of Minnesota
My commission expires 7/20/02

In witness whereof Paul Schmael, on behalf of the Bank of New York, has hereunto set his hand this 14th day of August, 2003.

Paul Schmael
Paul Schmael
Vice President of Corporate Trust



State of _____
County of _____
This foregoing instrument was acknowledged before me, this 14th day of August, 2003, by Paul Schmael

Miss Rose
Miss Rose
Notary Public, County of _____ State of _____
My commission expires _____

In witness whereof Douglas J. MacInnes on behalf of the Bank of New York, has hereunto set his hand this 14th day of August, 2003.

Douglas J. MacInnes
Douglas J. MacInnes
Trustee



This foregoing instrument was acknowledged before me, this 14th day of August, 2003, by Douglas J. MacInnes

Miss Rose
Miss Rose
Notary Public, County of _____ State of _____
My commission expires _____

I hereby certify that I have surveyed and platted the land described in the dedication of the plat FIRST ADDITION TO HARRIS BAY; that this plat is a correct representation of said survey; that all distances are correctly shown on said plat in figures denoting feet and hundredths of a foot; that all monuments have been correctly placed in the ground as shown on the plat; that there are no wet lands or public highways to be designated on said plot other than as shown hereby; and that the outside boundary lines are correctly designated on this plat.

LaVerne Leulling
LaVerne Leulling
Licensed Land Surveyor
License Number 16089



State of Minnesota
County of Itasca
The foregoing certificate was acknowledged before me, this 23rd day of June, 2003, by LaVerne Leulling, Licensed Land Surveyor.

Rochelle C. Kovanan
Rochelle C. Kovanan
Notary Public, Itasca County, Minnesota
My Commission expires 1-31-2005

Tax statement: I hereby certify that all taxes for _____ on the land described herein are paid.

I hereby certify that this plat has been checked and approved this 19th day of August, 2003.

Thomas J. O'Malley
Thomas J. O'Malley, Deputy County Auditor

All Taxes Paid
December 10, 2003
Gordon D. McFaul
St. Louis County Auditor
By *Larry Redmond* Deputy

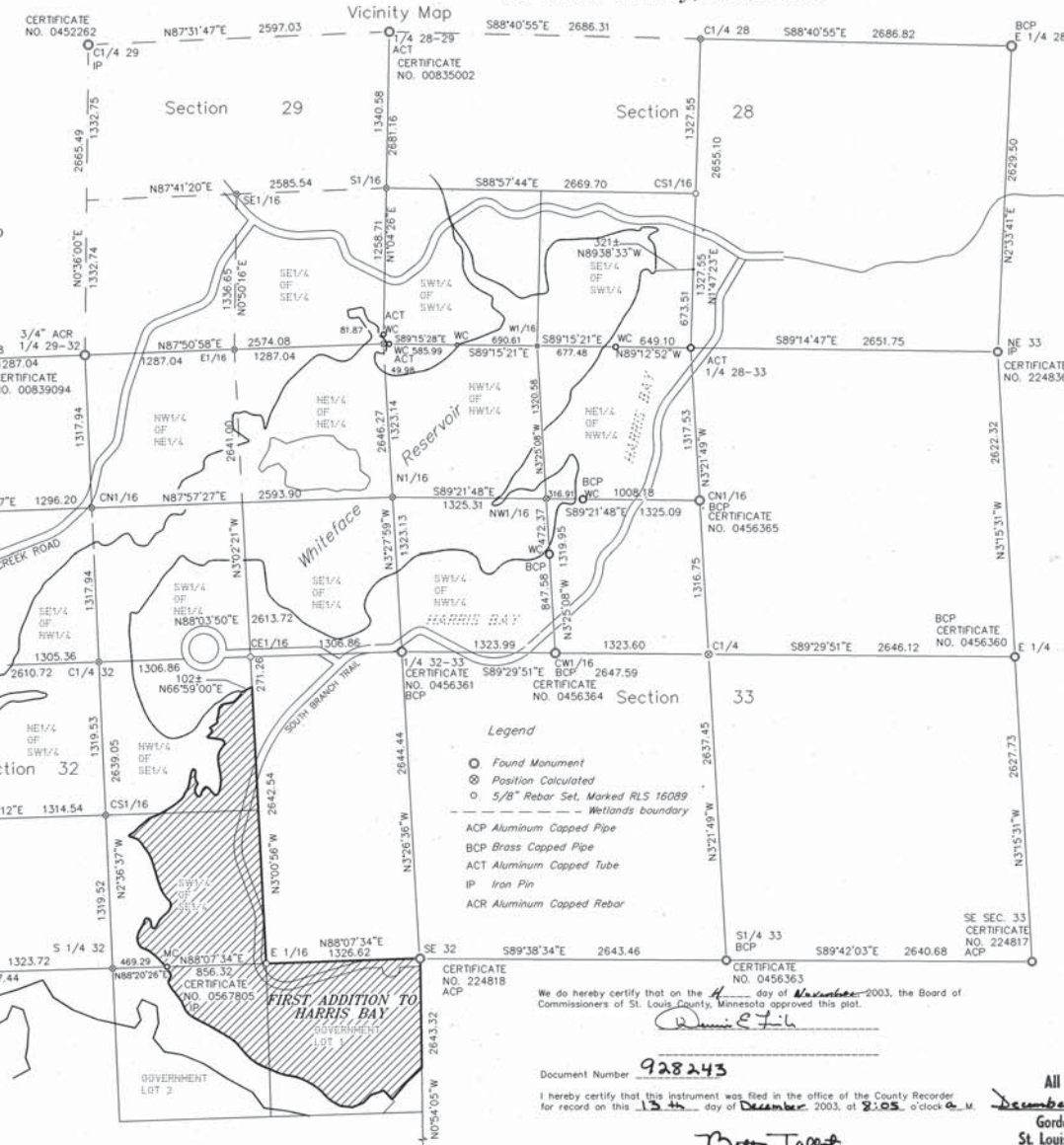
We do hereby certify that on the 14th day of August, 2003, the Board of Commissioners of St. Louis County, Minnesota approved this plat.

Dennis E. L.

Document Number 928243
I hereby certify that this instrument was filed in the office of the County Recorder for record on this 13th day of December, 2003, at 2:05 a'clock a.m.

Brian T. Talbot

Brian T. Talbot
County Recorder
St. Louis County, Minnesota



- Legend
- Found Monument
 - ⊙ Position Calculated
 - 5/8" Rebar Set, Marked RLS 16089
 - Wetlands boundary
 - ACP Aluminum Capped Pipe
 - BCP Brass Capped Pipe
 - ACT Aluminum Capped Tube
 - IP Iron Pin
 - ACR Aluminum Capped Rebar

SHEET 1 OF 2 SHEETS
Northern Lights Surveying & Mapping, Inc.
1518 8th Street South
Virginia, Minnesota 55792
Phone/Fax: (218) 741-2575
Email: nlsminc@angenet.com

OFFICIAL PLAT

FIRST ADDITION TO HARRIS BAY

Part of Section 32,
Township 56 North, Range 14 West
and Part of Section 5,
Township 55 North, Range 14 West
St. Louis County, Minnesota

928243

E1/4 SECTION 32



Bearings are based upon Grid North,
State Plane Coordinate System (NAD 83)
Minnesota North Zone

HARRIS BAY

SOUTH BRANCH TRAIL

NE corner of the NW1/4 of SE1/4 SEC. 32

CE1/16

HARRIS BAY

Whiteface Reservoir

THE NORMAL POOL ELEVATION OF THE WATER IN THE RESERVOIR IS 1455 FEET (NAVD 1988)
ON 2/14/2000 THE WATER ELEVATION WAS 1453.64 FEET (NAVD 1988).

C1/4

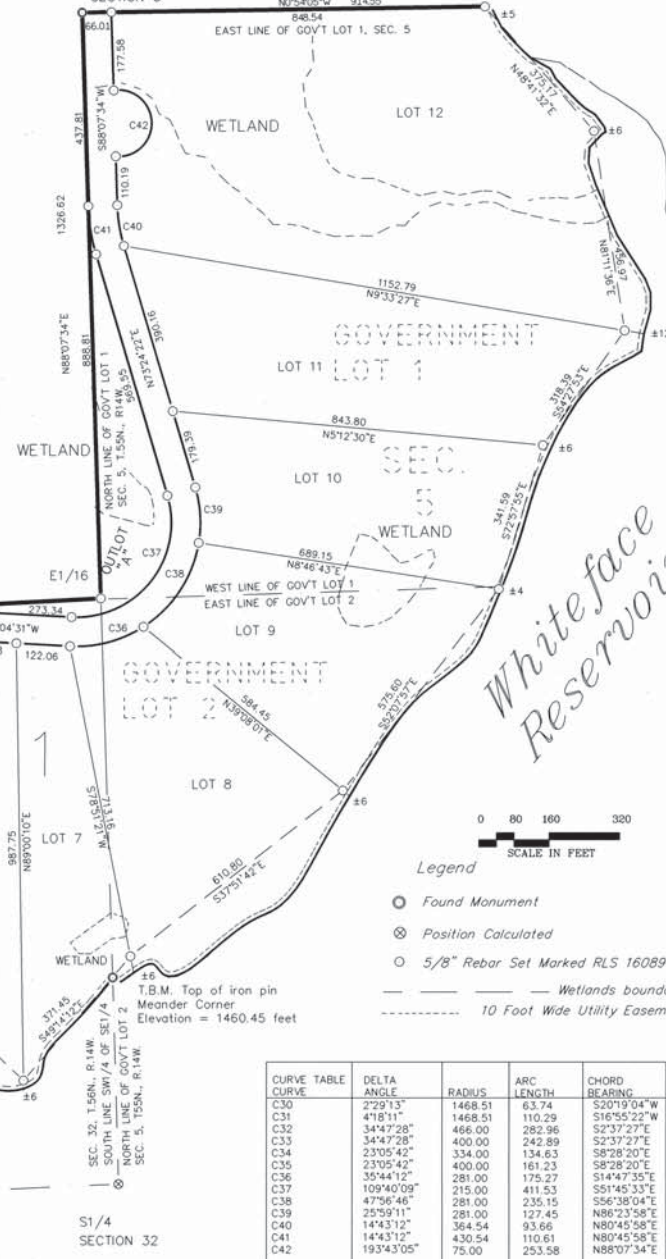
N2°36'37"W

CS1/16

2639.05

S1/4 SECTION 32

NE SECTION 5



Whiteface Reservoir



- Legend
- Found Monument
 - ⊗ Position Calculated
 - 5/8" Rebar Set Marked RLS 16089
 - Wetlands boundary
 - - - - 10 Foot Wide Utility Easement

CURVE TABLE CURVE	DELTA ANGLE	RADIUS	ARC LENGTH	CHORD BEARING
C30	2°29'13"	1468.51	63.74	S20°19'04"W
C31	4°18'11"	1468.51	110.29	S16°55'22"W
C32	34°47'28"	466.00	282.96	S2°37'27"E
C33	34°47'28"	400.00	242.89	S23°37'27"E
C34	23°05'42"	334.00	134.63	S8°28'20"E
C35	23°05'42"	400.00	161.23	S8°28'20"E
C36	35°44'12"	281.00	175.27	S14°47'35"E
C37	109°40'09"	215.00	411.53	S51°45'33"E
C38	47°56'46"	281.00	235.15	S56°38'04"E
C39	25°59'11"	281.00	127.45	N86°23'58"E
C40	14°43'12"	364.54	93.66	N80°45'58"E
C41	14°43'12"	430.54	110.61	N80°45'58"E
C42	19°34'05"	75.00	253.58	N88°07'34"E