

FISH LAKES SUNSET RIDGE

Part of the NW1/4-SE1/4, SW1/4-SE1/4, SW1/4-SW1/4 & SE1/4-SW1/4 of Section 28 and part of the NW1/4-NW1/4 & NE1/4-NW1/4, Section 33, T.52N., R.15W., Saint Louis County, Minnesota

KNOW ALL MEN BY THESE PRESENTS: That ALLETE, INC., a Minnesota Corporation, owner and proprietor of the following described property situated in the County of Saint Louis, State of Minnesota, to-wit:

That part of the Northwest Quarter of the Southeast Quarter, the Southwest Quarter of the Southeast Quarter, the Southwest Quarter of the Southwest Quarter and the Southeast Quarter of the Southwest Quarter of Section 28 and that part of the Northwest Quarter of the Northwest Quarter and the Northwest Quarter of the Northwest Quarter of Section 33, Township 52 North, Range 15 West, Saint Louis County, Minnesota, described as follows:

Commencing at the South Quarter Corner of said Section 28; thence South 88 degrees 46 minutes 43 seconds West, assumed bearing, along the south line of said Section 28 a distance of 108.84 feet; thence North 09 degrees 59 minutes 57 seconds West a distance of 78.47 feet to the point of beginning; thence continuing North 09 degrees 59 minutes 57 seconds West a distance of 86.00 feet; thence northerly, a distance of 289.24 feet, along a tangential curve concave to the east, having a radius of 314.94 feet and a central angle of 52 degrees 37 minutes 11 seconds; thence North 42 degrees 37 minutes 14 seconds East a distance of 100.01 feet; thence northerly, a distance of 455.54 feet, along a tangential curve concave to the west, having a radius of 468.00 feet and a central angle of 56 degrees 00 minutes 34 seconds to a point of reverse curvature; thence northeasterly, a distance of 475.83 feet, along a curve concave to the southeast, having a radius of 267.00 feet and a central angle of 102 degrees 06 minutes 31 seconds; thence North 88 degrees 43 minutes 11 seconds East a distance of 730.11 feet; thence southeasterly, northeasterly and westerly, a distance of 333.87 feet, along a non-tangential curve having a radius of 70.00 feet, central angle of 273 degrees 16 minutes 33 seconds [the radius point bears South 88 degrees 00 minutes 16 seconds East]; thence North 08 degrees 44 minutes 55 seconds East a distance of 395.24 feet; thence North 73 degrees 29 minutes 15 seconds West a distance of 280.85 feet; thence North 81 degrees 07 minutes 22 seconds West a distance of 125.31 feet; thence South 59 degrees 16 minutes 38 seconds West a distance of 88.69 feet; thence North 85 degrees 43 minutes 22 seconds West a distance of 200.59 feet; thence South 73 degrees 30 minutes 56 seconds West a distance of 208.66 feet; thence South 63 degrees 35 minutes 15 seconds West a distance of 150.40 feet; thence North 03 degrees 40 minutes 31 seconds West a distance of 260.85 feet; thence North 58 degrees 43 minutes 19 seconds East a distance of 290.60 feet; thence North 75 degrees 39 minutes 43 seconds East a distance of 101.83 feet; thence North 15 degrees 37 minutes 36 seconds East a distance of 110.29 feet; thence North 63 degrees 31 minutes 44 seconds West a distance of 182.56 feet; thence North 19 degrees 24 minutes 47 seconds West a distance of 196.52 feet; thence North 60 degrees 57 minutes 19 seconds West a distance of 173.53 feet; thence South 71 degrees 34 minutes 12 seconds West a distance of 178.89 feet; thence North 52 degrees 05 minutes 56 seconds West a distance of 152.20 feet to the North-South quarter line of said Section 28; thence South 01 degree 33 minutes 23 seconds East, along said North-South quarter line a distance of 1245.42 feet to the southwest corner of the NW1/4-SE1/4 of said Section 28; thence South 88 degrees 41 minutes 29 seconds West, along the north line of the SE1/4-SW1/4 of said Section 28 a distance of 303.46 feet; thence South 33 degrees 31 minutes 51 seconds East a distance of 131.73 feet; thence South 40 degrees 00 minutes 27 seconds West a distance of 225.05 feet; thence South 12 degrees 34 minutes 00 seconds East a distance of 186.85 feet; thence South 07 degrees 29 minutes 35 seconds West a distance of 268.74 feet; thence South 18 degrees 36 minutes 27 seconds West a distance of 148.41 feet; thence North 40 degrees 35 minutes 21 seconds West a distance of 225.70 feet; thence North 72 degrees 05 minutes 34 seconds West a distance of 107.18 feet; thence South 80 degrees 07 minutes 32 seconds West a distance of 104.34 feet; thence South 54 degrees 42 minutes 31 seconds West a distance of 241.08 feet; thence South 30 degrees 12 minutes 19 seconds West a distance of 277.86 feet; thence South 53 degrees 59 minutes 54 seconds West a distance of 142.58 feet; thence South 23 degrees 36 minutes 48 seconds West a distance of 86.50 feet; thence North 87 degrees 22 minutes 02 seconds West a distance of 102.80 feet; thence South 63 degrees 27 minutes 49 seconds West a distance of 69.06 feet; thence South 08 degrees 50 minutes 28 seconds East a distance of 141.67 feet; thence South 65 degrees 26 minutes 03 seconds East a distance of 93.24 feet; thence South 00 degrees 17 minutes 10 seconds East a distance of 146.38 feet; thence South 10 degrees 17 minutes 19 seconds West a distance of 230.35 feet; thence South 58 degrees 25 minutes 59 seconds West a distance of 89.08 feet; thence North 71 degrees 16 minutes 42 seconds West a distance of 216.14 feet; thence South 11 degrees 28 minutes 47 seconds East a distance of 158.98 feet; thence South 31 degrees 03 minutes 18 seconds West a distance of 117.30 feet; thence North 00 degrees 15 minutes 08 seconds East a distance of 125.43 feet; thence South 65 degrees 22 minutes 00 seconds West a distance of 81.40 feet; thence South 17 degrees 10 minutes 35 seconds West a distance of 354.71 feet; thence South 22 degrees 05 minutes 37 seconds East a distance of 389.12 feet; thence North 78 degrees 50 minutes 48 seconds East a distance of 386.67 feet; thence South 56 degrees 59 minutes 54 seconds East a distance of 69.88 feet; thence North 11 degrees 21 minutes 59 seconds East a distance of 335.26 feet; thence northeasterly and northerly a distance of 102.28 feet, along a non-tangential curve having a radius of 90.00 feet and a central angle of 97 degrees 40 minutes 10 seconds [the radius point bears North 13 degrees 59 minutes 30 seconds West]; thence northeasterly, a distance of 223.99 feet, along a non-tangential curve concave to the northwest, having a radius of 786.00 feet and a central angle of 16 degrees 45 minutes 14 seconds, [the chord of said curve bears North 25 degrees 35 minutes 42 seconds East] to a point of reverse curvature; thence northeasterly a distance of 136.11 feet, along a curve concave to the southeast, having a radius of 434.00 feet and a central angle of 18 degrees 21 minutes 55 seconds to a point of reverse curvature; thence northeasterly a distance of 234.55 feet, along a curve concave to the northwest, having a radius of 786.00 feet and a central angle of 17 degrees 32 minutes 38 seconds; thence North 19 degrees 02 minutes 22 seconds East a distance of 100.00 feet; thence northeasterly a distance of 384.25 feet along a tangential curve concave to the southeast, having a radius of 361.14 feet and a central angle of 80 degrees 57 minutes 41 seconds; thence North 80 degrees 00 minutes 03 seconds East a distance of 500.37 feet to the point of beginning.

Subject to and together with any valid easements, restrictions and reservations if any. Has caused the same to be surveyed and platted as FISH LAKES SUNSET RIDGE and do hereby dedicate to the public the roads shown hereon.

IN WITNESS WHEREOF, I Deborah A. Amburg SVP, General Counsel & Sec of ALLETE, INC. have hereunto set my hand for ALLETE, INC. this 4 day of June, 2010.

By Deborah A. Amburg Its Senior Vice President, General Counsel & Secretary

STATE OF MINNESOTA

COUNTY OF ST. LOUIS

The foregoing instrument was acknowledged before me this 4 day of June, 2010, by Deborah A. Amburg SVP, General Counsel & Secretary of ALLETE, INC.

Jim Helmer
Notary Public, Saint Louis County, Minnesota
My commission expires 07/31/2013



I, Norman B. Livgard, hereby certify that I have surveyed and platted the property described in the dedication of this plat as FISH LAKES SUNSET RIDGE; that the plat is a correct representation of said survey, that all distances are correctly shown on the plat in feet and hundredths of a foot, that all monuments have been placed in the ground as shown; that the outside boundary lines are correctly designated on the plat and that there are no wetlands or public highway to be designated on said plat other than as shown thereon.

Norman B. Livgard
Norman B. Livgard, Land Surveyor
Registration No. 10725

STATE OF MINNESOTA

COUNTY OF ST. LOUIS

The foregoing Surveyor's Certificate was acknowledged before me this 13th day of MAY, 2010, by Norman B. Livgard, Minnesota Registered Land Surveyor.

Max M. Livgard
Notary Public, Saint Louis County, Minnesota
My commission expires June 31, 2013



I hereby certify that this plat has been checked and approved this 2nd day of June, 2010

Thomas J. O'Reilly
Saint Louis County Surveyor

We do hereby certify that on the 8th day of July, 2010, the Board of Commissioners of Saint Louis County, Minnesota, approved this plat.

By Stacy O'Neil Vice, Chairman

ATTEST: Patricia White Auditor

No current or delinquent taxes due this 24th day of September, 2010.

By J. Wickham Deputy
For Donald Doldich, St. Louis County Auditor

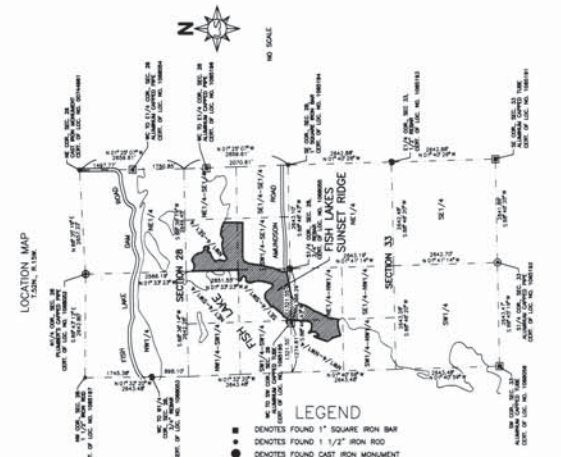
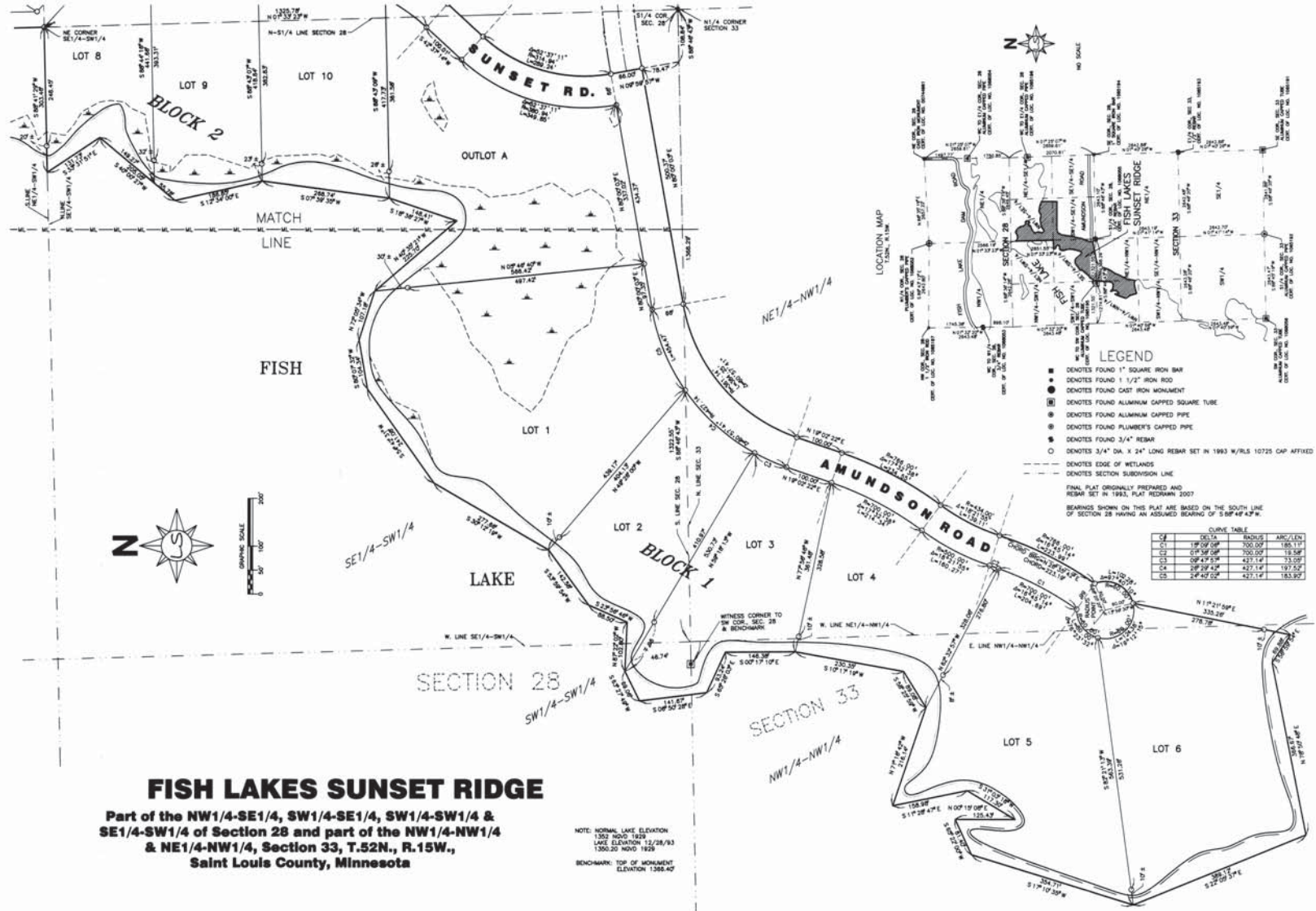
OFFICE OF THE ST. LOUIS COUNTY RECORDER
STATE OF MINNESOTA
COUNTY OF ST. LOUIS

I hereby certify that the within instrument was filed in this office on the 24 day of September, 2010, at 3:02 PM and was duly filed as Document No. 114426

Mark A. Monacelli
St. Louis County Recorder
By J. Abell Deputy

OFFICIAL PLAT

114426



- LEGEND**
- DENOTES FOUND 1" SQUARE IRON BAY
 - DENOTES FOUND 1 1/2" IRON ROD
 - DENOTES FOUND CAST IRON MONUMENT
 - DENOTES FOUND ALUMINUM CAPPED SQUARE TUBE
 - DENOTES FOUND ALUMINUM CAPPED PIPE
 - DENOTES FOUND PLUMBER'S CAPPED PIPE
 - DENOTES FOUND 3/4" REBAR
 - DENOTES 3/4" DIA. X 24" LONG REBAR SET IN 1993 W/RLS 10725 CAP AFFIXED
 - - - DENOTES EDGE OF WETLANDS
 - - - DENOTES SECTION SUBDIVISION LINE

FINAL PLAT ORIGINALLY PREPARED AND REBAR SET IN 1993. PLAT RECORD NO. 2007
 BEARINGS SHOWN ON THIS PLAT ARE BASED ON THE SOUTH LINE OF SECTION 28 HAVING AN ASSUMED BEARING OF S 89° 49' 42" W.

CURVE TABLE

CD	DL	BL	ML	ARC/LEN
C1	19° 09' 00"	700.00'	185.11'	
C2	0° 00' 00"	700.00'	18.50'	
C3	0° 00' 00"	437.14'	107.50'	
C4	2° 29' 42"	427.14'	107.50'	
C5	2° 42' 00"	437.14'	108.90'	



FISH LAKES SUNSET RIDGE
 Part of the NW1/4-SE1/4, SW1/4-SE1/4, SW1/4-SW1/4 & SE1/4-SW1/4 of Section 28 and part of the NW1/4-NW1/4 & NE1/4-NW1/4, Section 33, T.52N., R.15W., Saint Louis County, Minnesota

NOTE: NORMAL LAKE ELEVATION 1352.00/0.00
 LAKE ELEVATION 12/28/93 1350.20 MHD 1829
 BENCHMARK: TOP OF MONUMENT ELEVATION 1388.42

FISH LAKES SUNSET RIDGE

Part of the NW1/4-SE1/4, SW1/4-SE1/4, SW1/4-SW1/4 & SE1/4-SW1/4 of Section 28 and part of the NW1/4-NW1/4 & NE1/4-NW1/4, Section 33, T.52N., R.15W., Saint Louis County, Minnesota

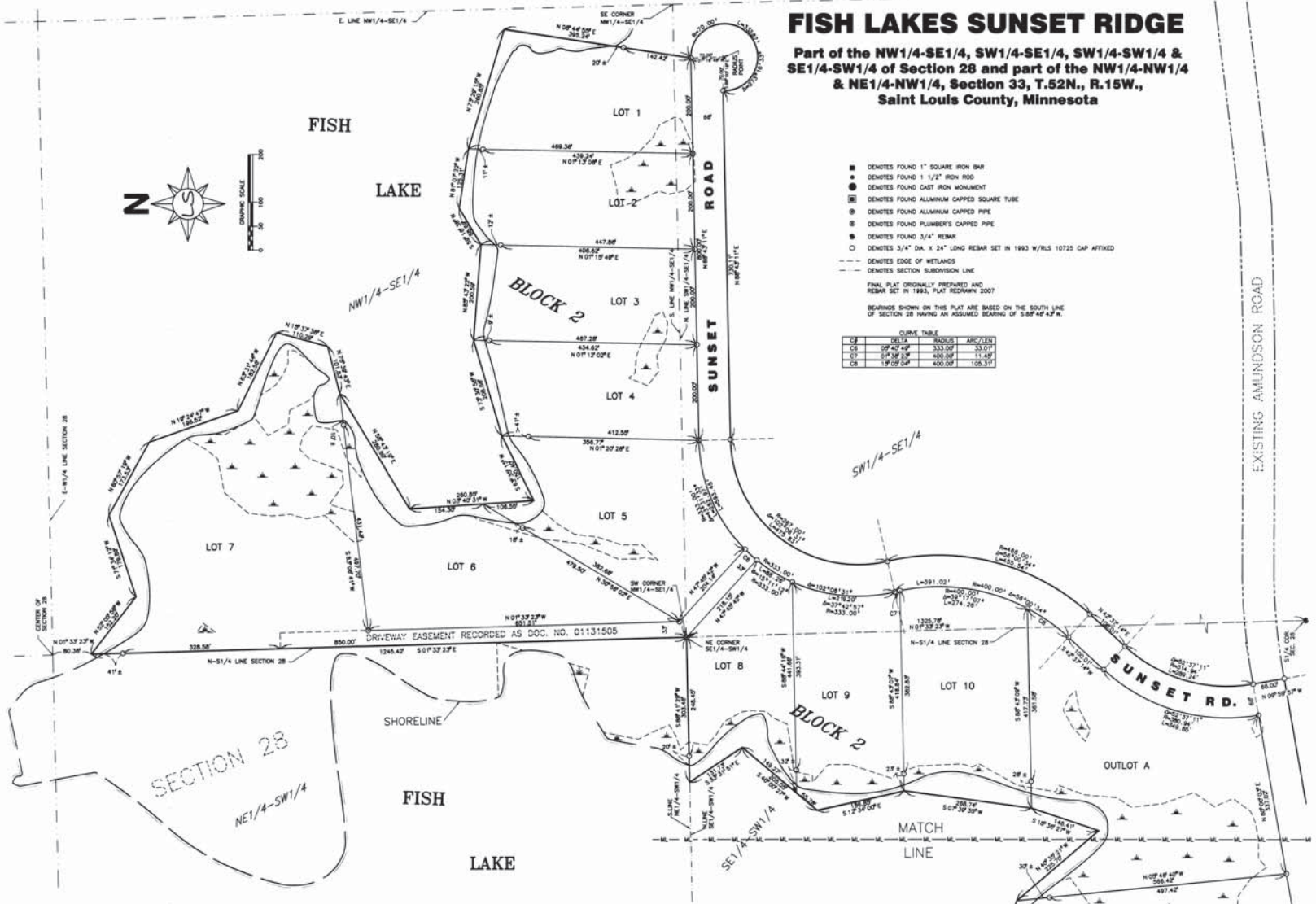


- DENOTES FOUND 1" SQUARE IRON BAR
- DENOTES FOUND 1/2" IRON ROD
- ⊙ DENOTES FOUND CAST IRON MONUMENT
- ⊠ DENOTES FOUND ALUMINUM CAPPED SQUARE TUBE
- ⊕ DENOTES FOUND ALUMINUM CAPPED PIPE
- ⊖ DENOTES FOUND PLUMBER'S CAPPED PIPE
- ⊗ DENOTES FOUND 3/4" REBAR
- DENOTES 3/4" DIA. X 24" LONG REBAR SET IN 1993 W/RLS 10735 CAP AFFIXED
- - - DENOTES EDGE OF WETLANDS
- - - DENOTES SECTION SUBDIVISION LINE

FINAL PLAT ORIGINALLY PREPARED AND REBAR SET IN 1993, PLAT REDRAWN 2007

BEARINGS SHOWN ON THIS PLAT ARE BASED ON THE SOUTH LINE OF SECTION 28 HAVING AN ASSUMED BEARING OF S 89° 42' 47" W.

CD	DELTA	RADIUS	ARC/LEN
C1	0° 45' 48"	333.00'	33.00'
C2	0° 38' 23"	400.00'	11.49'
C3	1° 09' 24"	400.00'	105.31'



EXISTING AMUNDSON ROAD