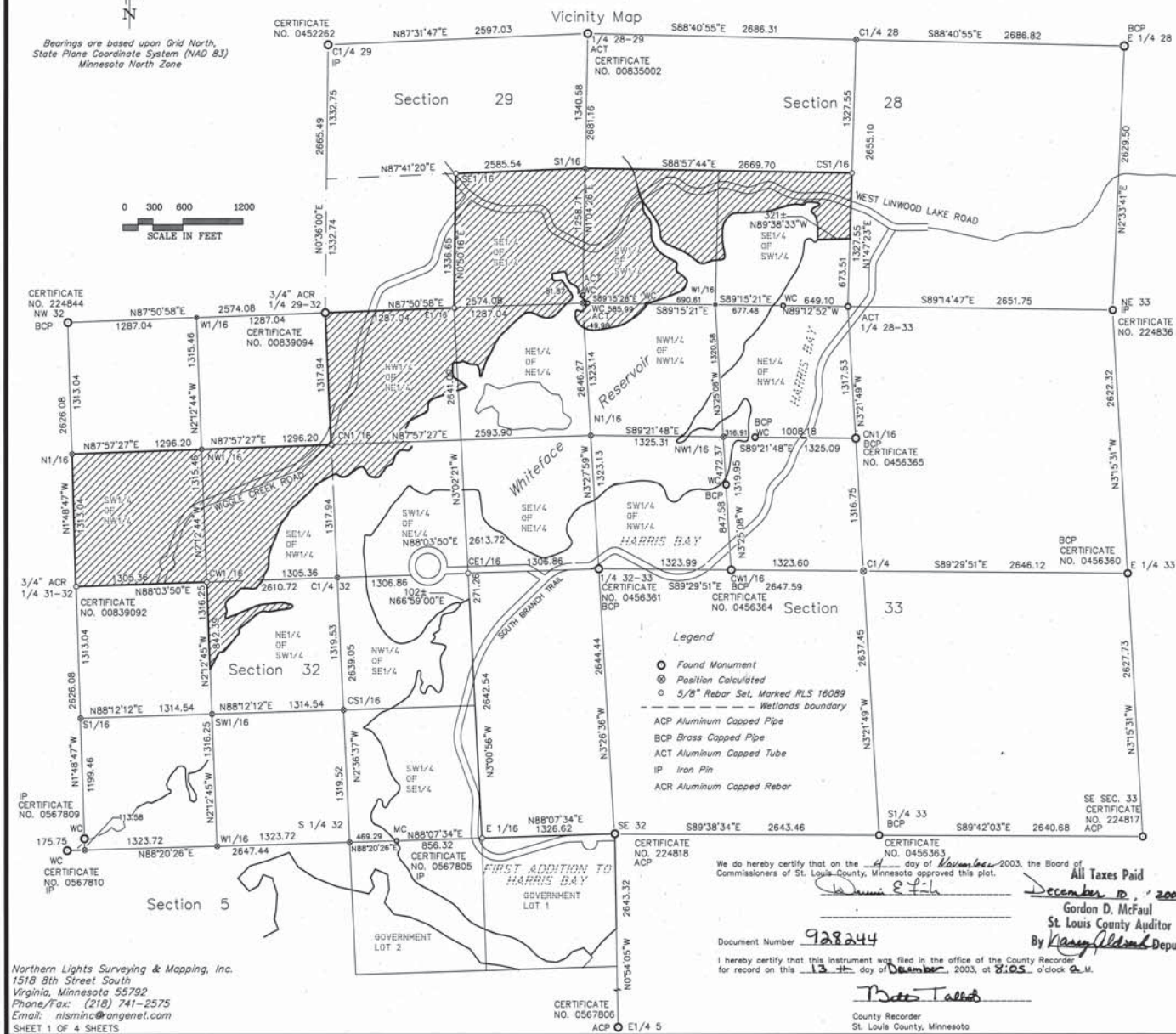
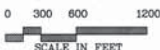


OFFICIAL PLAT

928244

SECOND ADDITION TO HARRIS BAY  
Part of Sections 28, 29, 32, AND 33,  
Township 56 North, Range 14 West  
St. Louis County, Minnesota

Bearings are based upon Grid North,  
State Plane Coordinate System (NAD 83)  
Minnesota North Zone



- Legend**
- Found Monument
  - ⊙ Position Calculated
  - ⊕ 5/8" Rebar Set, Marked RLS 16089
  - Wetlands boundary
  - ACP Aluminum Capped Pipe
  - BCP Brass Capped Pipe
  - ACT Aluminum Capped Tube
  - IP Iron Pin
  - ACR Aluminum Capped Rebar

KNOW ALL MEN BY THESE PRESENTS: That Minnesota Power, a Minnesota Corporation and The Bank of New York, as trustee, sole proprietors and mortgage holders of the following described property, located in the County of St. Louis, State of Minnesota, to wit: All that part of the NE1/4 of SW1/4, SW1/4 of NW1/4, SE1/4 of NE1/4, NW1/4 of NE1/4 and NE1/4 of NE1/4, Section 32, the SE1/4 of SE1/4, Section 29, the NW1/4 of NW1/4, Section 33 and the SW1/4 of SW1/4 and the SE1/4 of SW1/4, Section 28, Township 56 North, Range 14 West, lying northerly and westerly of the Whiteface Reservoir and that part of the SE1/4 of SW1/4, Section 28, Township 56 North, Range 14 West, 4th Principal Meridian, St. Louis County, Minnesota, bounded on the west by the Whiteface Reservoir and the South by the following described line:  
Commencing at the Southeast corner of said SE1/4 of the SW1/4, Section 28; thence N14°7'23"E, along the East line of said SE1/4 of the SW1/4, a distance of 673.51 feet, to the point of beginning; thence N89°38'33"W, a distance of 321 feet, more or less, to the shoreline of the Whiteface Reservoir and there terminating.

Have caused the same to be surveyed and plotted as SECOND ADDITION TO HARRIS BAY and do hereby donate and dedicate to the public use, forever, the road, drainage and utility easement, as shown on this plat.

In witness whereof Dave P. Jeronimus, on behalf of Minnesota Power, has hereunto set his hand this 5th day of September, 2003.  
*Dave P. Jeronimus*  
Dave P. Jeronimus  
VICE PRESIDENT

State of Minnesota  
County of St. Louis  
This foregoing instrument was acknowledged before me, this day of Sept, 2003, by Dave P. Jeronimus  
*Joe Selweg*  
Notary Public, St. Louis County, Minnesota  
My commission expires 1/1/05

In witness whereof Paul Schmalzel, on behalf of The Bank of New York, as trustee, has hereunto set his hand this 3rd day of September, 2003.  
*Paul Schmalzel*  
Paul Schmalzel  
President of Corporate Trust

State of \_\_\_\_\_  
County of \_\_\_\_\_  
This foregoing instrument was acknowledged before me, this 3rd day of September, 2003, by Paul Schmalzel  
*William J. Cassels*  
Notary Public, County of \_\_\_\_\_, State of \_\_\_\_\_  
My commission expires \_\_\_\_\_

In witness whereof Douglas J. MacInnes, as trustee, has hereunto set his hand this 3rd day of September, 2003.  
*Douglas J. MacInnes*  
Douglas J. MacInnes  
Trustee

State of \_\_\_\_\_  
County of \_\_\_\_\_  
This foregoing instrument was acknowledged before me, this 3rd day of September, 2003, by Douglas J. MacInnes  
*William J. Cassels*  
Notary Public, State of New York  
No. 01CA507729  
Qualified in Stone County  
Commission Expires May 18, 2006

In witness whereof Douglas J. MacInnes, as trustee, has hereunto set his hand this 3rd day of September, 2003.  
*Douglas J. MacInnes*  
Douglas J. MacInnes  
Trustee

State of \_\_\_\_\_  
County of \_\_\_\_\_  
This foregoing instrument was acknowledged before me, this 3rd day of September, 2003, by Douglas J. MacInnes  
*William J. Cassels*  
Notary Public, County of \_\_\_\_\_, State of \_\_\_\_\_  
My commission expires \_\_\_\_\_

I hereby certify that I have surveyed and plotted the land described in the dedication of the plot "SECOND ADDITION TO HARRIS BAY"; that this plot is a correct representation of said survey; that all distances are correctly shown on said plot in figures denoting feet and hundredths of a foot; that all monuments have been correctly placed in the ground as shown on the plot; that there are no wet lands or public highways to be designated on said plot other than as shown thereon; and that the outside boundary lines are correctly designated on this plat.  
*Loverne Leuelling*  
Loverne Leuelling  
Licensed Land Surveyor  
License Number 16089

State of Minnesota  
County of St. Louis  
The foregoing certificate was acknowledged before me, this 18th day of July, 2003, by Loverne Leuelling, Licensed Land Surveyor.  
*Rochelle C. Kovaman*  
Rochelle C. Kovaman  
Notary Public, St. Louis County, Minnesota  
My Commission expires Jan 31, 2005

Tax statement: I hereby certify that all taxes for \_\_\_\_\_ on the land described herein are paid.  
*Gordon D. McFaul*  
Gordon D. McFaul  
St. Louis County Auditor  
By *Nancy Aldred* Deputy

I hereby certify that this plot has been checked and approved this 5th day of September, 2003.  
*Thomas J. O'Malley*  
Thomas J. O'Malley  
Deputy County Surveyor

We do hereby certify that on the 4th day of November, 2003, the Board of Commissioners of St. Louis County, Minnesota approved this plat.  
*Wanda E. Felt*  
Wanda E. Felt  
December 10, 2003  
Gordon D. McFaul  
St. Louis County Auditor  
By *Nancy Aldred* Deputy

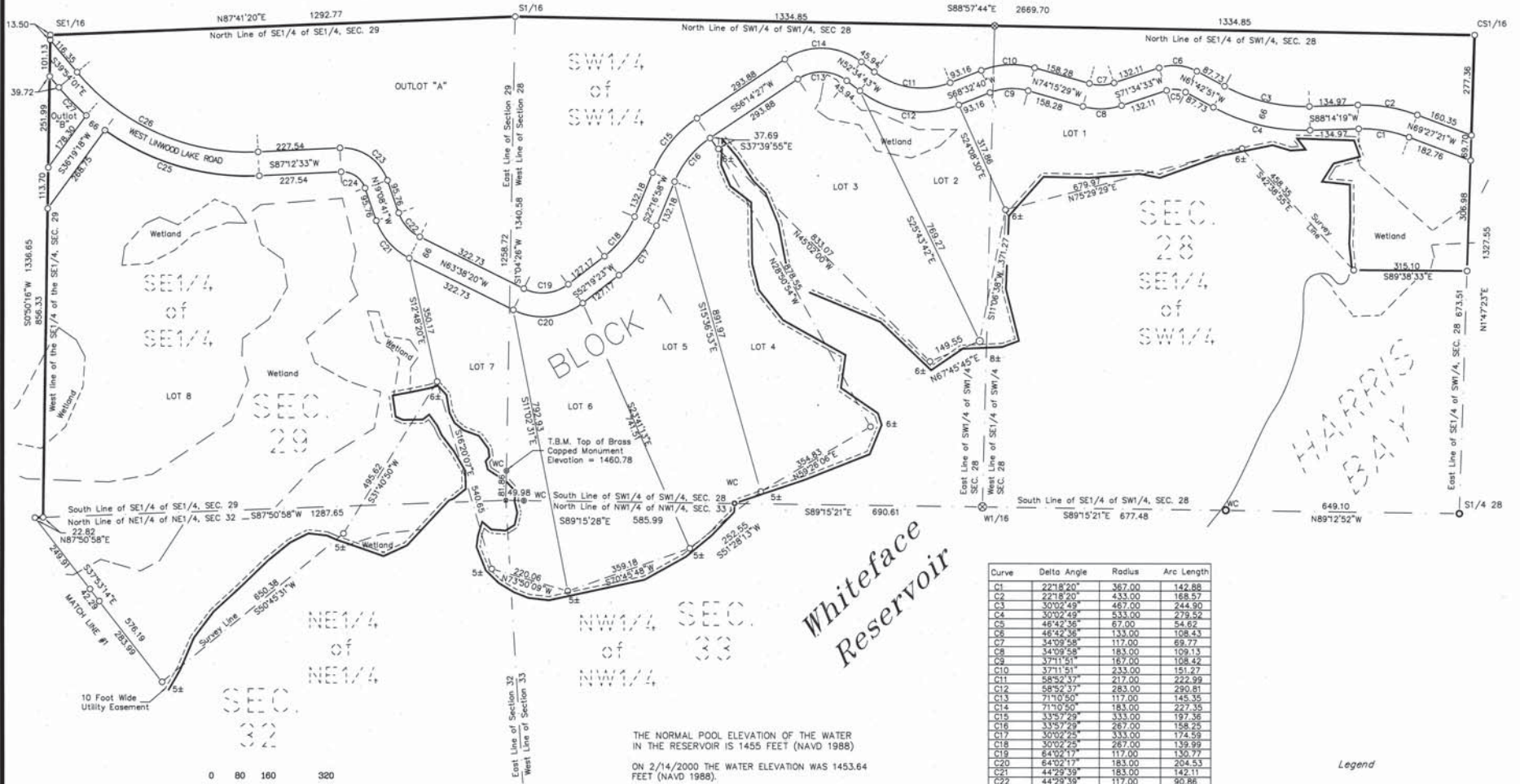
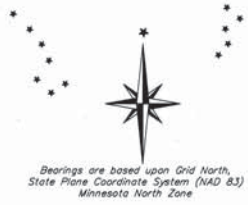
Document Number 928244  
I hereby certify that this instrument was filed in the office of the County Recorder for record on this 13th day of December, 2003, at 2:05 o'clock P.M.  
*Peter Tarsch*  
Peter Tarsch  
County Recorder  
St. Louis County, Minnesota

Northern Lights Surveying & Mapping, Inc.  
1518 8th Street South  
Virginia, Minnesota 55792  
Phone/Fax: (218) 741-2575  
Email: nlsminc@angenet.com  
SHEET 1 OF 4 SHEETS

OFFICIAL PLAT

**SECOND ADDITION TO HARRIS BAY**  
 Part of Sections 28, 29, 32, and 33,  
 Township 56 North, Range 14 West  
 St. Louis County, Minnesota

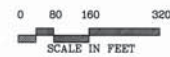
928244



Curve	Delta Angle	Radius	Arc Length
C1	22°18'20"	367.00	142.88
C2	22°18'20"	433.00	168.57
C3	30°02'49"	467.00	244.90
C4	30°02'49"	533.00	275.52
C5	48°42'36"	67.00	54.62
C6	48°42'36"	133.00	108.43
C7	34°09'58"	117.00	89.77
C8	34°09'58"	183.00	109.13
C9	37°11'51"	167.00	108.42
C10	37°11'51"	233.00	151.27
C11	58°52'37"	217.00	222.99
C12	58°52'37"	283.00	290.81
C13	71°10'50"	117.00	145.35
C14	71°10'50"	183.00	221.35
C15	33°57'29"	333.00	197.36
C16	33°57'29"	267.00	158.25
C17	30°02'29"	333.00	174.59
C18	30°02'29"	267.00	139.99
C19	64°02'17"	117.00	130.77
C20	64°02'17"	183.00	204.53
C21	44°29'39"	183.00	142.11
C22	44°29'39"	117.00	90.86
C23	73°38'46"	133.00	170.95
C24	73°38'46"	67.00	86.12
C25	38°11'13"	683.00	455.21
C26	52°53'26"	617.00	569.58
C27	9°09'43"	683.00	109.22

THE NORMAL POOL ELEVATION OF THE WATER IN THE RESERVOIR IS 1455 FEET (NAVD 1988)  
 ON 2/14/2000 THE WATER ELEVATION WAS 1453.64 FEET (NAVD 1988).

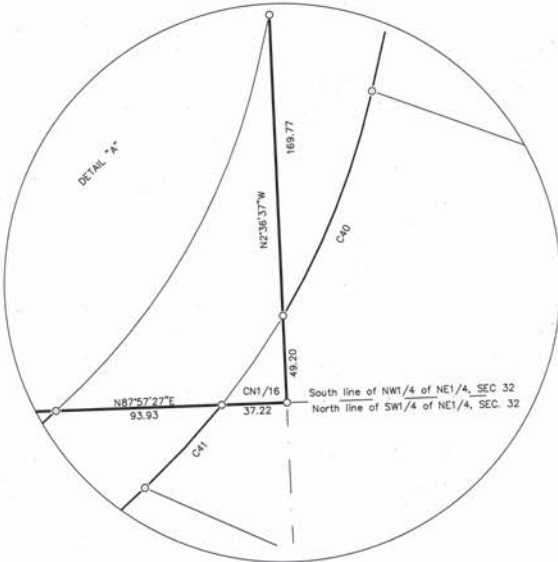
- Legend**
- Found Monument
  - ⊗ Position Calculated
  - 5/8" Rebar Set, Marked RLS 16289
  - Wetlands boundary
  - - - Utility Easement
  - - - Survey Line



OFFICIAL PLAT

SECOND ADDITION TO HARRIS BAY  
Part of Sections 28, 29, 32, and 33,  
Township 56 North, Range 14 West  
St. Louis County, Minnesota

928244



Curve	Delta Angle	Radius	Arc Length
C28	87°17'00"	967.00	139.85
C29	107°14'29"	1033.00	184.64
C30	28°02'36"	183.50	83.78
C31	28°02'36"	216.50	98.86
C32	22°16'10"	183.50	71.32
C33	22°16'10"	216.50	84.15
C34	39°45'26"	416.50	289.01
C35	39°45'26"	383.50	266.11
C36	32°58'48"	233.00	134.12
C37	32°58'48"	167.00	96.13
C38	29°28'07"	233.00	119.84
C39	29°28'07"	167.00	85.89
C40	18°05'12"	433.00	136.81
C41	8°25'59"	433.00	63.73
C42	21°46'13"	633.00	250.52
C43	21°46'13"	587.00	215.44

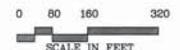


SE1/4  
of  
SE1/4

SEC.  
29

NE1/4  
of  
NE1/4

SEC.  
32  
Whiteface  
Reservoir

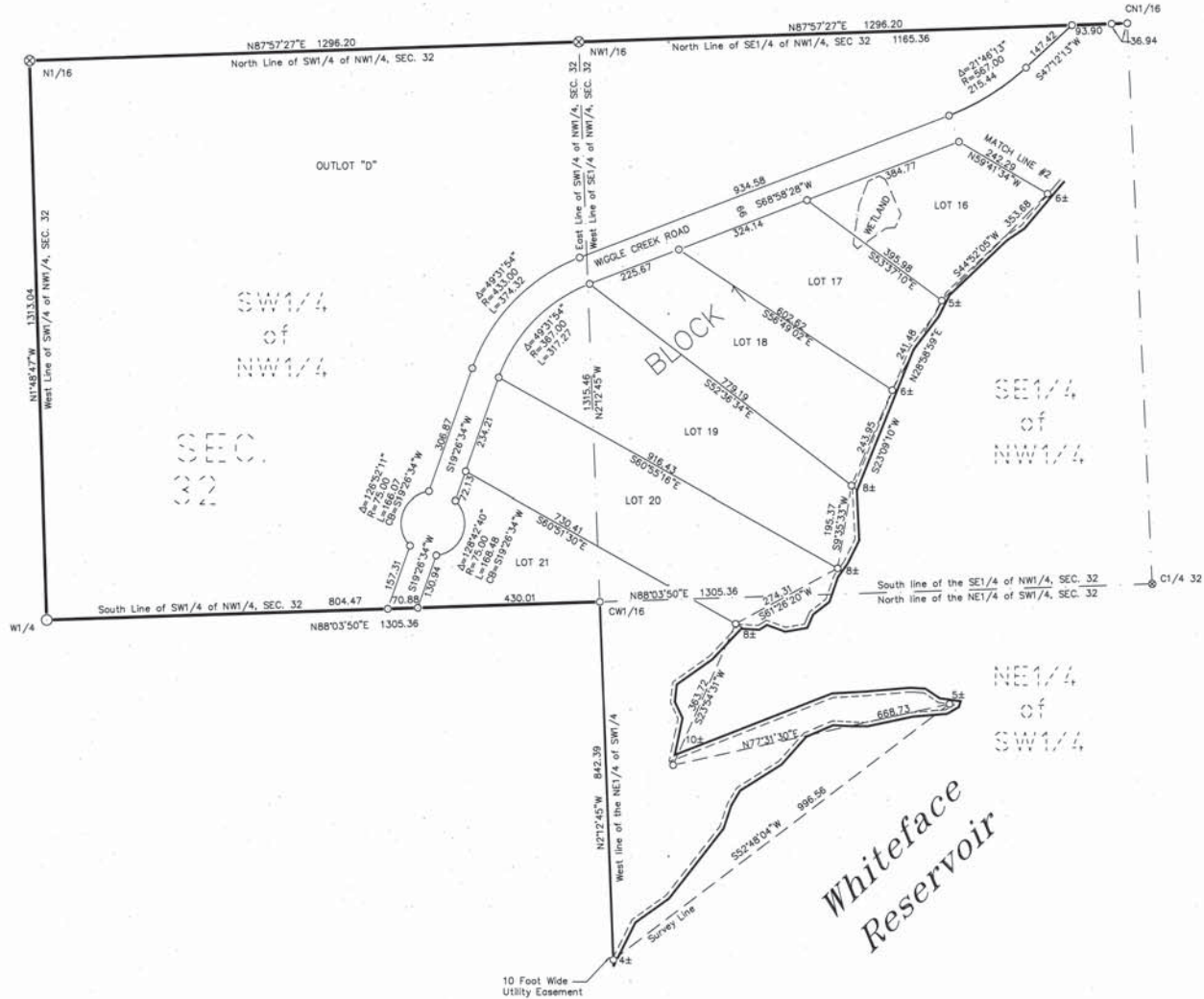


- Legend
- Found Monument
  - ⊗ Position Calculated
  - 5/8" Rebar Set, Marked RLS 16089
  - Wetlands boundary
  - Utility Easement
  - Survey Line
  - Drainage and Driveway Easement

OFFICIAL PLAT

**SECOND ADDITION TO HARRIS BAY**  
 Part of Sections 28, 29, 32, and 33,  
 Township 56 North, Range 14 West  
 St. Louis County, Minnesota

928244



Legend

- Found Monument
- ⊗ Position Calculated
- 5/8" Rebar Set, Marked RLS 16089
- - - Wetlands boundary
- - - Utility Easement
- - - Survey Line